


Mental models illustrated



MONKEY & THE PEDESTAL

A young monkey with brown fur and a pinkish face is sitting in a lush jungle. She has her hand to her chin, looking thoughtful. The background is filled with warm, golden light filtering through the trees.

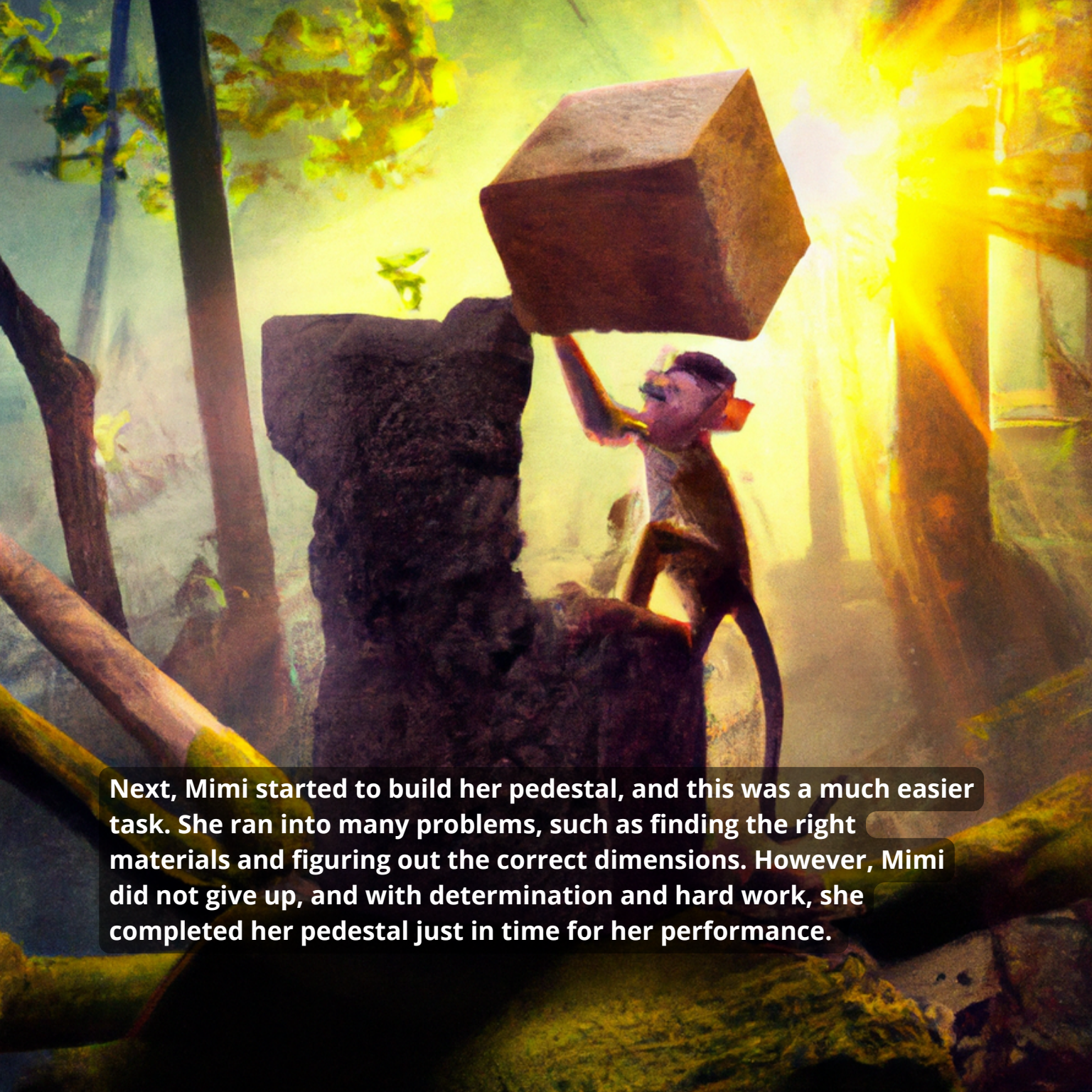
In the lush jungle, a curious little monkey named Mimi loved to sing. She dreamed of singing for all her friends in the jungle.

However, Mimi needed a pedestal to perform on, as her voice needed to be heard far and wide.

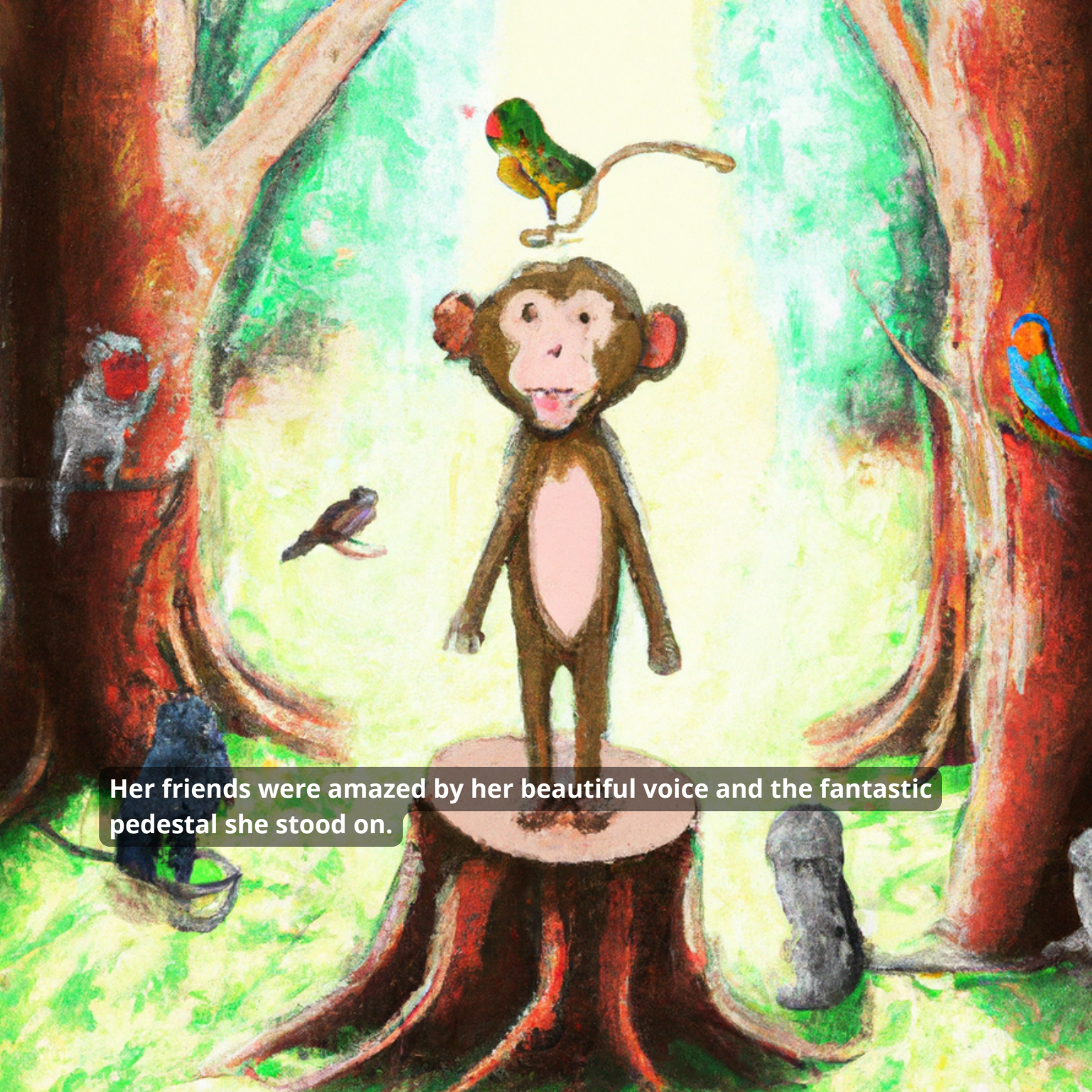
Mimi's dilemma was that she needed to learn to sing and build a pedestal. But which one should she do first?

Mimi decided to tackle the harder task first, which was learning to sing. She learned the words and practiced every day, and her voice improved steadily. After weeks of hard work, she was confident enough to perform in front of her friends.





Next, Mimi started to build her pedestal, and this was a much easier task. She ran into many problems, such as finding the right materials and figuring out the correct dimensions. However, Mimi did not give up, and with determination and hard work, she completed her pedestal just in time for her performance.



Her friends were amazed by her beautiful voice and the fantastic pedestal she stood on.

Mimi realized that by tackling the harder problem first, she was able to accomplish both tasks. She learned that with perseverance and determination, anything is possible. From that day on, Mimi became the star of the jungle, and all her animal friends gathered around to hear her sing on her beautiful pedestal.

